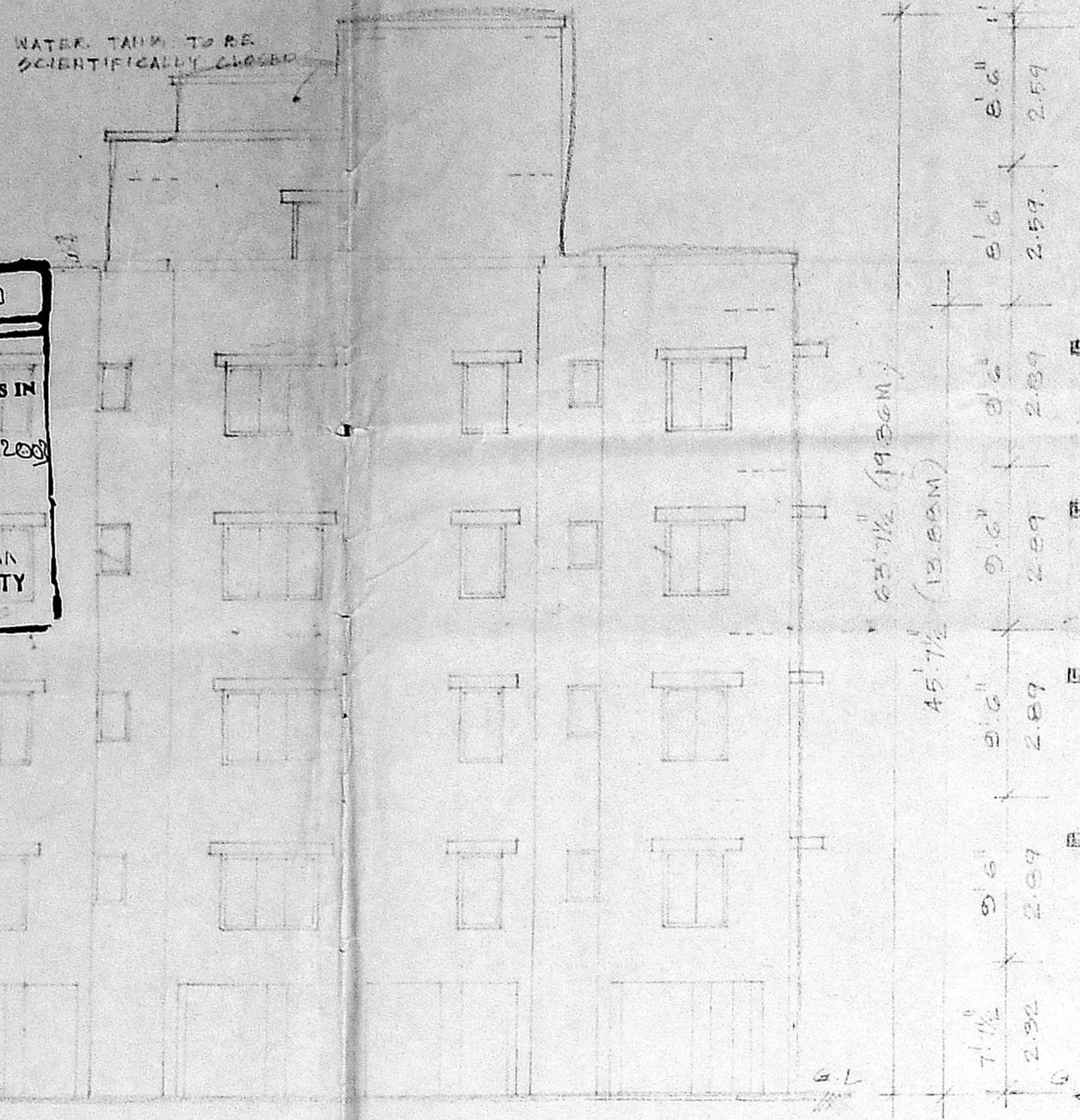


SCHEDULE OF MATERIALS	
10	CW FLUSH DOOR
20	CW FLUSH DOOR
30	CW GLAZE
40	CW GLAZE
50	CW GLAZE
60	CW GLAZE
70	CW GLAZE
80	CW GLAZE
90	CW GLAZE
100	CW GLAZE
110	CW GLAZE
120	CW GLAZE
130	CW GLAZE
140	CW GLAZE
150	CW GLAZE
160	CW GLAZE
170	CW GLAZE
180	CW GLAZE
190	CW GLAZE
200	CW GLAZE
210	CW GLAZE
220	CW GLAZE
230	CW GLAZE
240	CW GLAZE
250	CW GLAZE
260	CW GLAZE
270	CW GLAZE
280	CW GLAZE
290	CW GLAZE
300	CW GLAZE
310	CW GLAZE
320	CW GLAZE
330	CW GLAZE
340	CW GLAZE
350	CW GLAZE
360	CW GLAZE
370	CW GLAZE
380	CW GLAZE
390	CW GLAZE
400	CW GLAZE
410	CW GLAZE
420	CW GLAZE
430	CW GLAZE
440	CW GLAZE
450	CW GLAZE
460	CW GLAZE
470	CW GLAZE
480	CW GLAZE
490	CW GLAZE
500	CW GLAZE
510	CW GLAZE
520	CW GLAZE
530	CW GLAZE
540	CW GLAZE
550	CW GLAZE
560	CW GLAZE
570	CW GLAZE
580	CW GLAZE
590	CW GLAZE
600	CW GLAZE
610	CW GLAZE
620	CW GLAZE
630	CW GLAZE
640	CW GLAZE
650	CW GLAZE
660	CW GLAZE
670	CW GLAZE
680	CW GLAZE
690	CW GLAZE
700	CW GLAZE
710	CW GLAZE
720	CW GLAZE
730	CW GLAZE
740	CW GLAZE
750	CW GLAZE
760	CW GLAZE
770	CW GLAZE
780	CW GLAZE
790	CW GLAZE
800	CW GLAZE
810	CW GLAZE
820	CW GLAZE
830	CW GLAZE
840	CW GLAZE
850	CW GLAZE
860	CW GLAZE
870	CW GLAZE
880	CW GLAZE
890	CW GLAZE
900	CW GLAZE
910	CW GLAZE
920	CW GLAZE
930	CW GLAZE
940	CW GLAZE
950	CW GLAZE
960	CW GLAZE
970	CW GLAZE
980	CW GLAZE
990	CW GLAZE
1000	CW GLAZE

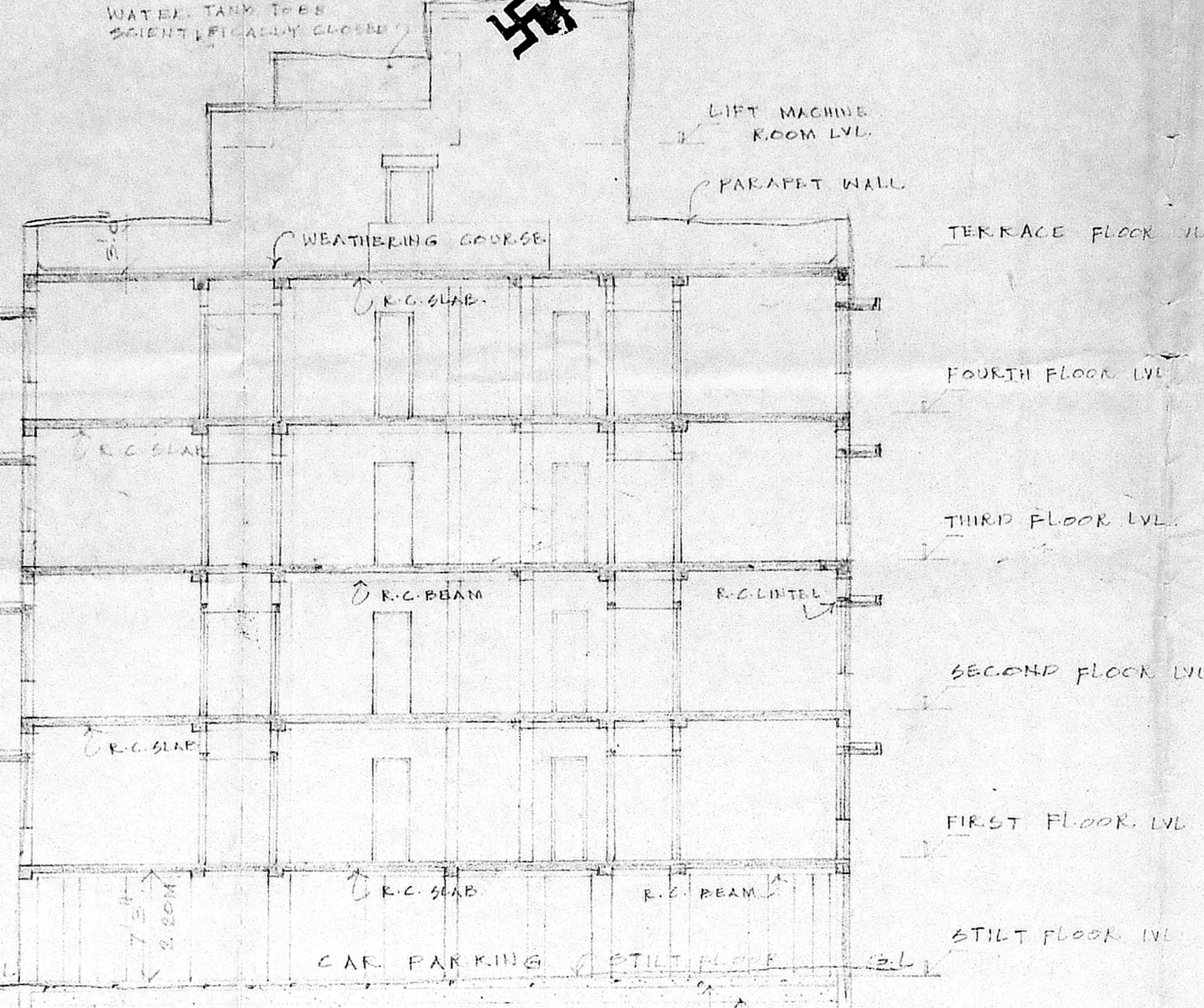
APPROVED
 SUBMITTED IN ACCORDANCE WITH THE PROVISIONS OF THE CHENNAI METROPOLITAN DEVELOPMENT AUTHORITY ACT, 1973.
 FOR MEMBER
 CHENNAI METROPOLITAN DEVELOPMENT AUTHORITY
 CHENNAI-600 008.
 28/11/2003
 29/11/2003

OFFICE COPY

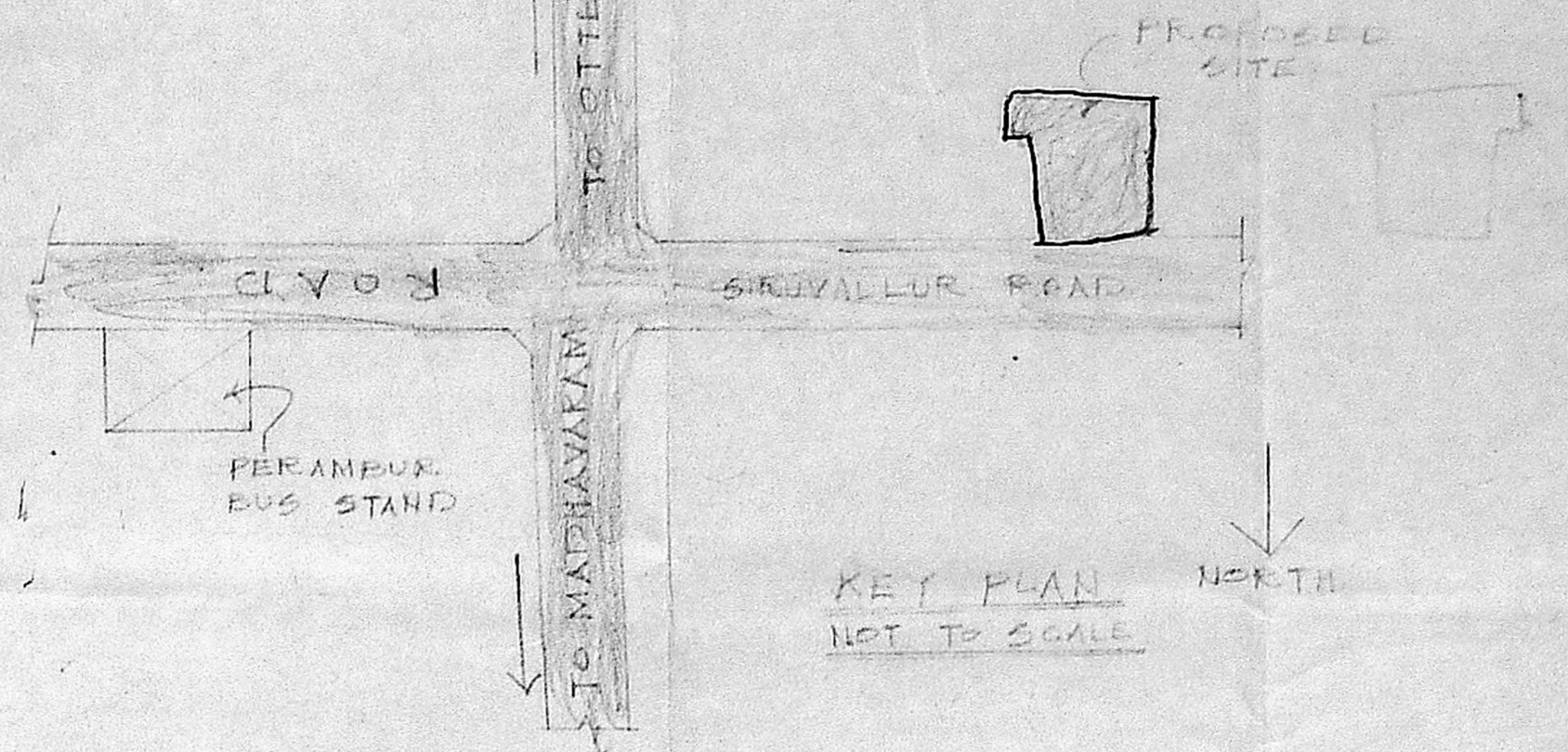
B/SR/B/24/338/2003
 Planning Permit No.
APPROVED
 SUBMITTED IN ACCORDANCE WITH THE PROVISIONS OF THE CHENNAI METROPOLITAN DEVELOPMENT AUTHORITY ACT, 1973.
 FOR MEMBER
 CHENNAI METROPOLITAN DEVELOPMENT AUTHORITY
 CHENNAI-600 008.
 28/11/2003
 29/11/2003



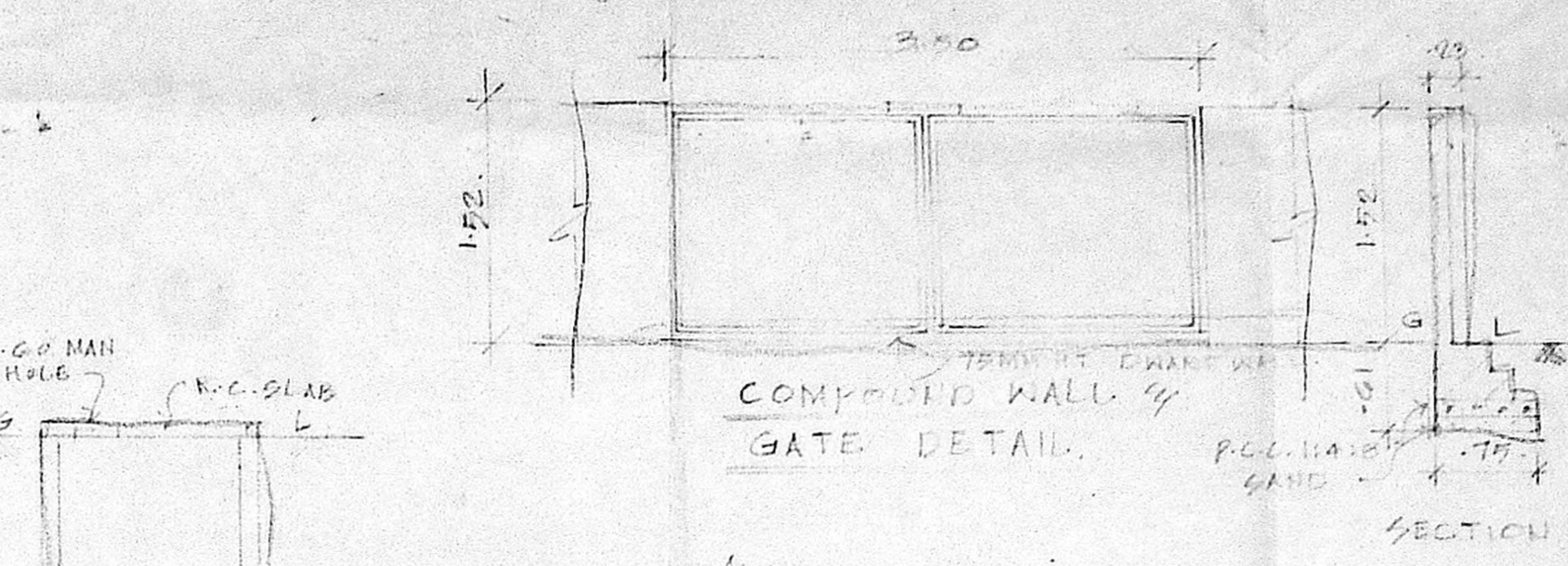
FRONT ELEVATION



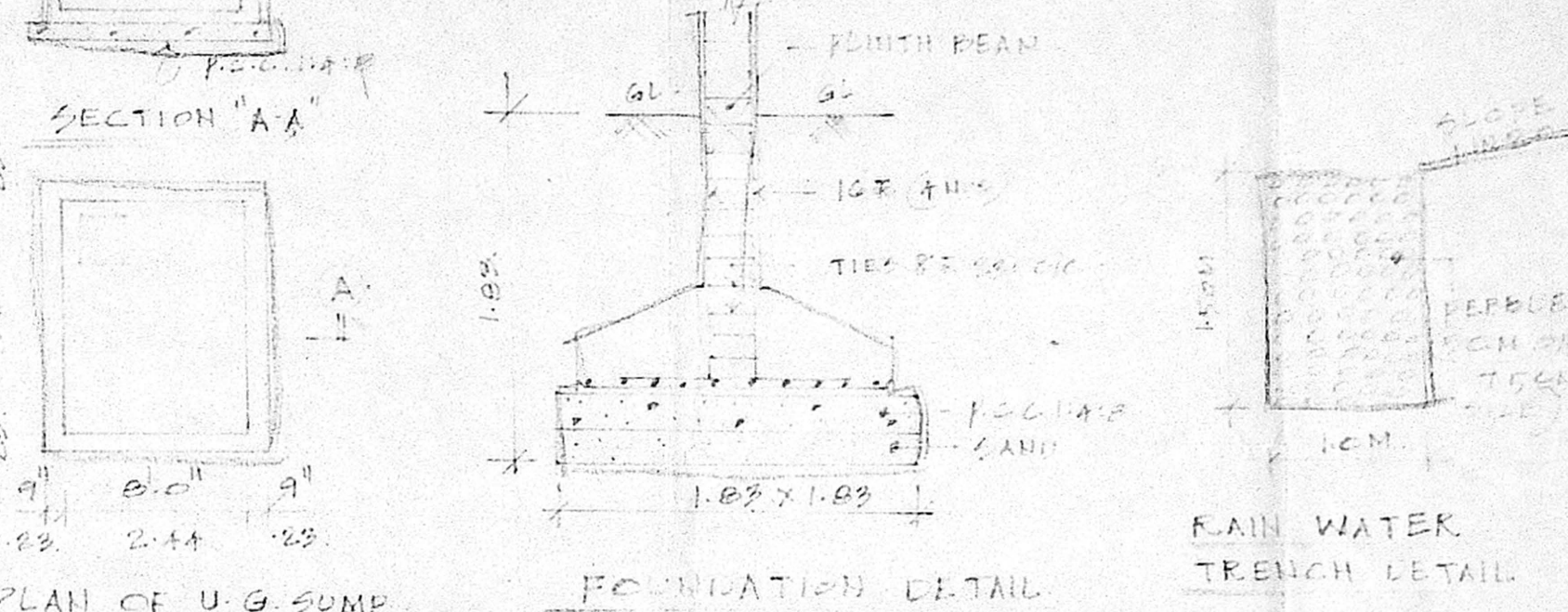
SECTION ON 'X-X'



KEY PLAN NOT TO SCALE



COMPOSITE WALL & GATE DETAIL



FOUNDATION DETAIL

PLAN OF U.G. SUMP

SPECIFICATIONS:
 FOUNDATION : R.C. COLUMN FOOTING IN R.C.C. 1:2:4
 SUPER STRUCTURE : BRICK WORK IN COMB. ROOFING : 125MM THK R.C.C. SLAB IN COMB.
 PLASTERING : 1:4:8 IN COMB. FLOORING : MOSAIC FLOORING
 WOOD WORK : T.M. MAIN DOOR, ALL OTHER DOORS, WINDOWS AND VENTILATORS ARE MADE BY I CLASS COUNTRY WOOD

AREA STATEMENT	
STILT FLOOR AREA	286.00
FIRST FLOOR AREA	3051.12
SECOND FLOOR AREA	3051.12
THIRD FLOOR AREA	3051.12
FOURTH FLOOR AREA	3051.12
TOTAL FLOOR AREA	12489.48
TERRACE FLOOR AREA	388.00
PLOT AREA	8844.81
(AS PER PATTI)	8299.04
PLOT COVERAGE	30.76%
F.S.I.	1.49

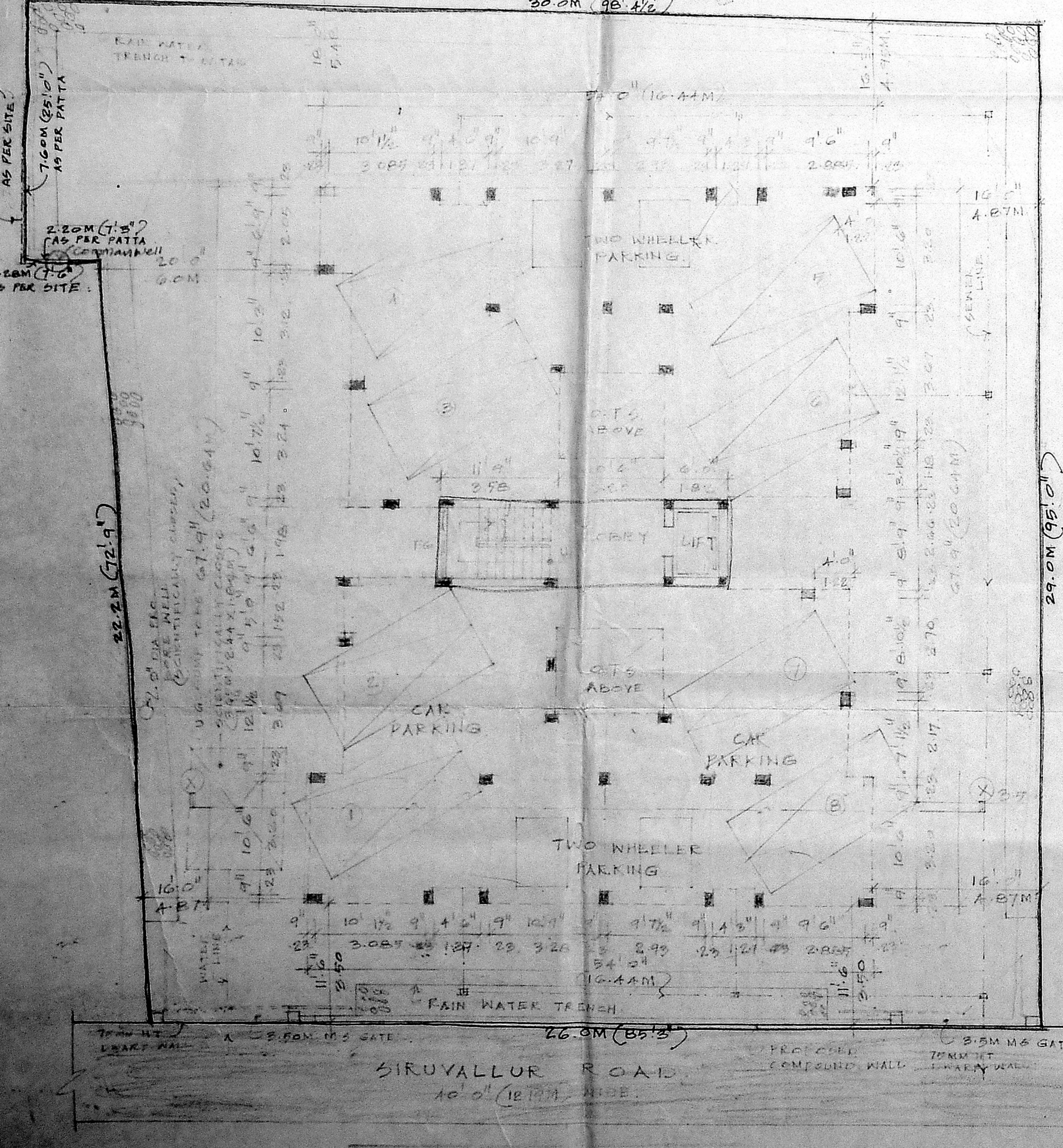
GENERAL CODE REFERENCE:
 PROFESSIONAL WORK
 ROAD WORK
 BOUNDARY LINE
 CENTER LINE
 WATER LINE

SCALE 1" = 3.0' (1:90)

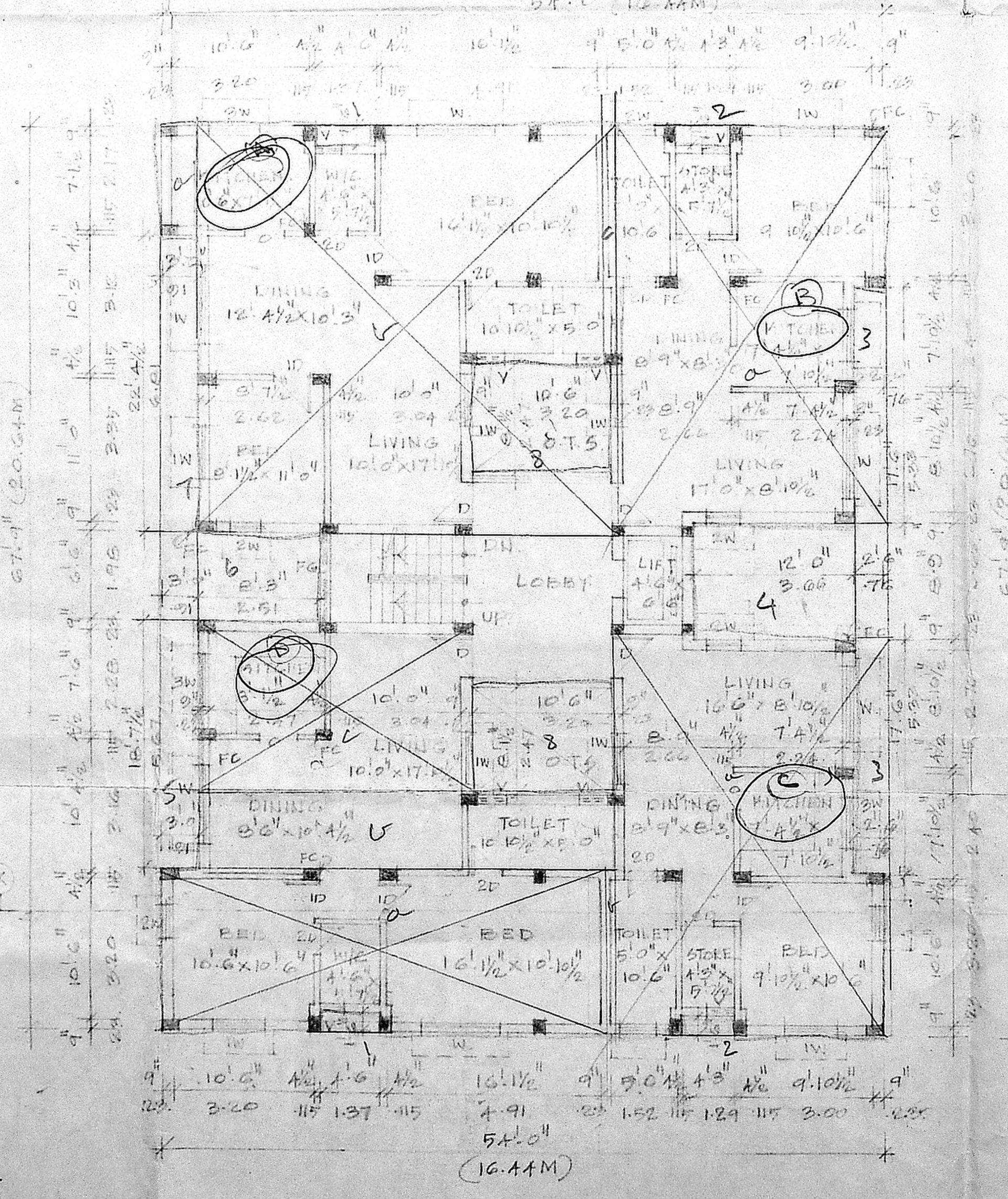
PROPOSED RESIDENTIAL APARTMENT AT DOOR NO. 27 & 28, SIRUVALUR ROAD, PERAMBUR, CHENNAI 600011 IN T.S. NO. 6 BLOCK NO. 15 AND T.S. NO. 54 OF BLOCK NO. 16, SIRUVALUR DIVISION, PURASAWALKAM PERAMBUR TALUK.

SIG OF OWNER:

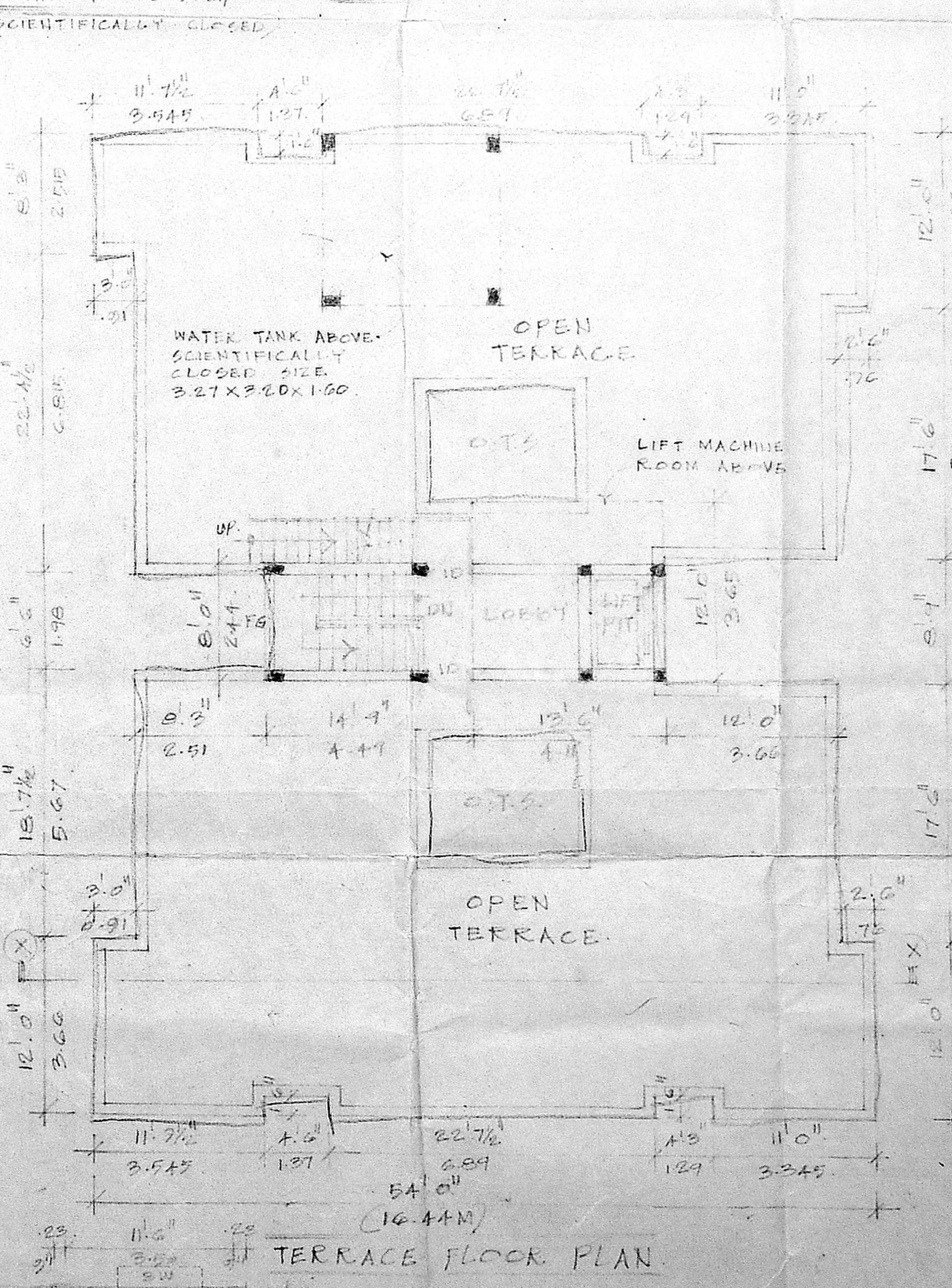
SIG OF LICENSED SURVEYOR:



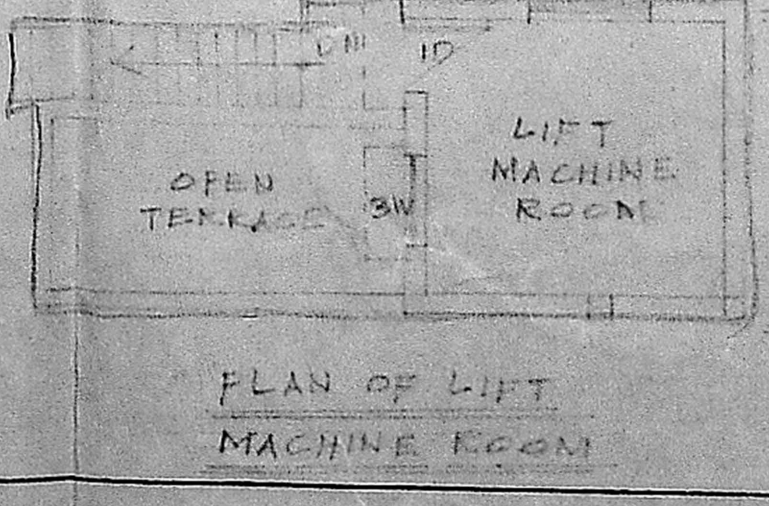
SITE & STILT FLOOR PLAN



TYPICAL FLOOR PLAN



TERRACE FLOOR PLAN



PLAN OF LIFT MACHINE ROOM

K. SELVAM, B.E., AMIE, CE (I.A.E.S.)
 Consulting Civil Engineer Chartered Engineer
 Approved Valuer & Licensed Surveyor
 Class I Reg No. 600/2003-2004
 Door No. 11/17, Thiruvalluvar Salai,
 Mogappair East, Chennai-600 053.
 Ph: 26562 50, Call: 98412 82080
 (GREEN CHANNEL FILE NOT APPLICABLE)